

Honda HRH 536 QX Lawn

£1,195.00 ex VAT

Ex-hire Honda HRH 536 QX professional mower - recently serviced & in full working order.

Registered in 2024, maintained & serviced from new by Balmers GM (authorised Honda Main dealer).

Collection only from our Burnley or Wakefield depots.

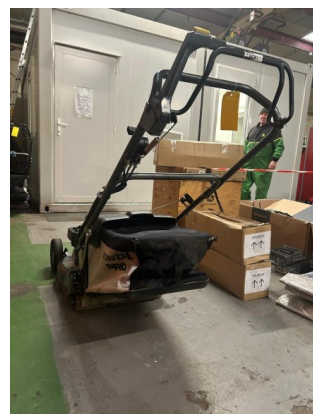
FEATURES:

- Cutting width: 21" / 53cm
- Transmission: Variable hydrostatic
- Deck Material: Cast aluminium
- Rear Roller: Yes
- Pro engine: The professional four-stroke engine has overhead valves, ball-bearing crankshafts, steel cylinder liners and high-performance air filters.
- Rotostop: Stop the blades whilst leaving the engine running
- Grass collector: 83L
- Mulching: Optional

DETAIL:

With its sturdy cast aluminium cutting deck and a reinforced cutting deck handle, the HRH is designed to master even the most demanding tasks over and over again.

It is powered by Honda's GXV 160 Pro motor which has a robust cylinder liner and cast iron crankshaft that run on specially adapted bearings to increase their service life. It also features a two-part air filter and a large 1.5 litre fuel tank for long life.



PRODUCT DETAILS

Stock Reference: FL 8064