

TW 280HBD Diesel Wood

£0.00 ex VAT

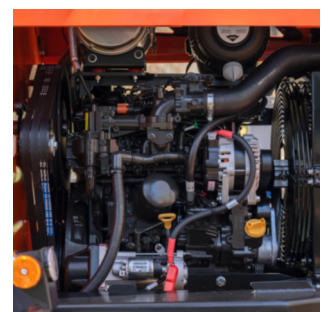
Features:

IDEAL CHIPPER FOR ARBORISTS & CONTRACTORS

- Hyundai 3 cylinder turbo diesel engine (55hp)
- Ergonomically positioned HMI display screen
- Zero maintenance blade to anvil gap
- Bluetooth connectivity through App based platform for comprehensive machine troubleshooting
- Class leading 280 mm x 210 mm infeed opening (8 ¼" cutting performance)
- Quad force rollers for ultimate grip, crushing and infeed power
- 2x quick access double-sided reversible blades
- Dual, ergonomic heavy duty infeed controls
- Adjustable discharge chute
- Centralised grease point

Benefits:

- Enhanced operator diagnostics for easy troubleshooting
- Intuitive display to support operation and simple DPF regeneration
- Updated throttle controls within the operator zone
- Extra large infeed aperture for accessible chipping
- Timberwolf - easy to use, easy to own



PRODUCT DETAILS

New Machine